



FAQ# 26-03250205  
Modified 03/25/02

## Where does Parallel Crystal write its temporary (TEMP) files?

\*\*\*\*\*

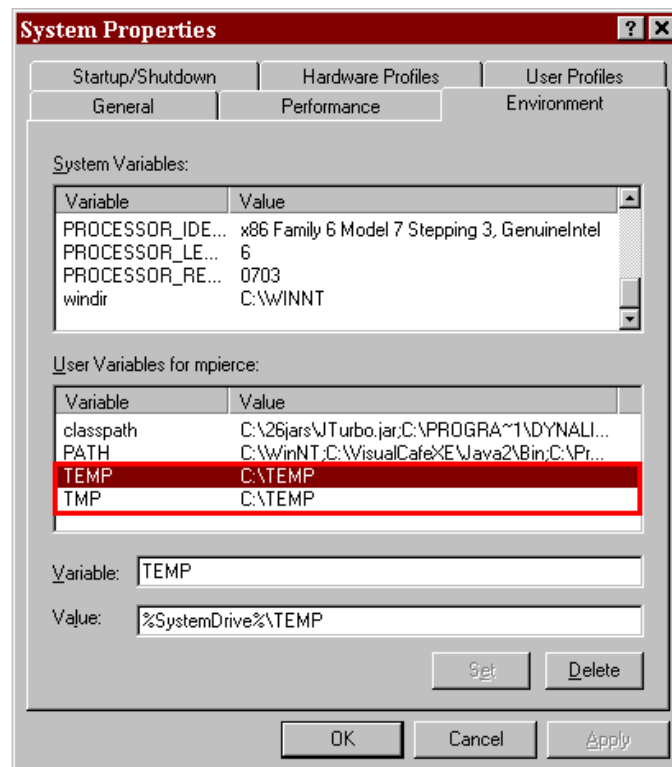
Parallel Crystal writes all of its temporary files to directories that exist in the Dynalivery directory structure. For example: <PATH TO DYNALIVERY>\PCRE directory.

However, there is a known condition in the underlying Crystal Report runtime libraries where Crystal Reports will write temporary (temp) files to the incorrect directory on the computer. Specifically, they are being written to the %systemroot% instead of the desired directory, for example they are written to C:\Winnt instead of C:\Temp.

Please review the following Seagate/Crystal Decisions knowledge base document for solution options:

<http://support.crystaldecisions.com/library/kbase/articles/c2006120.asp>

In any case it is possible to change the environmental variable for the TEMP and TMP directories. (See diagram below)



### Important Note:

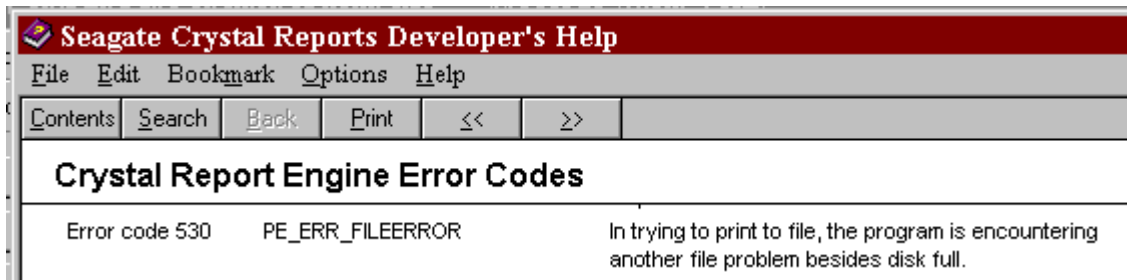
Seagate uses the TEMP environment variable to indicate where temporary files are to be written. By default this usually points to C:\TEMP directory. This is true even if Parallel



FAQ# 26-03250205  
Modified 03/25/02

Crystal and Crystal reports are loaded on a drive other than C. If the C drive runs out of disk space the Crystal Reports Engine will throw the following error in the server log:

```
03/06/02 14:08:07 1015440817865 CREAPI Error: returned for job: 1  
03/06/02 14:08:07 1015440817865 Error Code : 530
```



This fix is to free up some space on the C drive or direct the TEMP environmental variable to a larger volume.