

**PDF Font Issues:** Why are my fonts being replaced with Courier? and What is a “Serious Font Error”?  
Why do fonts in Crystal 8.5 look bigger than they did in Crystal 7?

\*\*\*\*\*

**Issue 1**

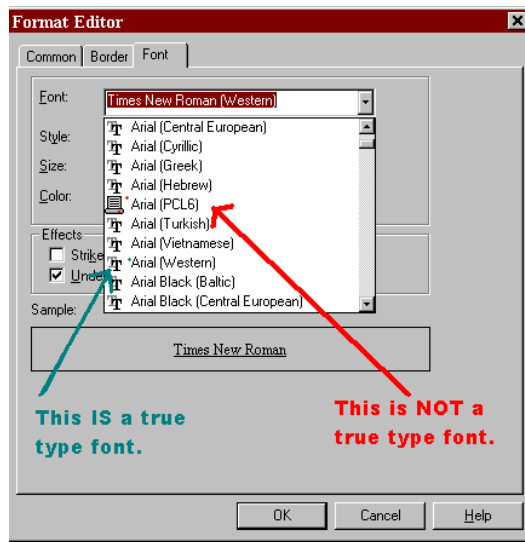
My fonts are being replaced with something else.

**Solution**

Parallel Crystal only supports True Type fonts. If something other than a true type font is used the log will show an error, similar to the one below, and PCRE will substitute the font with the Courier font:

“Serious font error: Couldn't embed the font named AvantGarde”

Please refer to the diagram below to see the difference between True Type fonts and all others.



**Issue 2**

I am only using True Type fonts in my report file, yet the resulting PDF report is still substituting the font I want with the font Courier.

**Solution**

All True Type fonts that are used in the report file must be loaded on the Parallel Crystal report server in order for them to be properly rendered in the report file.

**Other References Regarding Fonts and PDF files:**

Adobe Typeface Licensing Frequently Asked Questions (FAQ)  
<http://www.adobe.com/support/salesdocs/21ca.htm>

How to tell if the fonts have been embedded or not in a PDF.  
<http://www.pdfzone.com/resources/tips/tip0006.html>

Embedded Fonts from Some Foundries Don't Appear in PDF Files As Expected  
<http://www.adobe.com/support/techdocs/196ee.html>



**FAQ# 26-01040202**  
Modified 03/13/02

### **Issue 3**

After upgrading from Crystal Reports v7 to v8+ you may have noticed that the fonts in your PDF files look bigger or in some cases smaller.

### **Solution**

Crystal Reports version 8+ renders text objects differently than in previous versions, so text objects are now truly WYSIWYG (what you see is what you get).

For more information on how to compensate for this change please see the Seagate/Crystal Decisions knowledge base document below:

<http://support.crystaldecisions.com/library/kbase/articles/c2006765.asp>